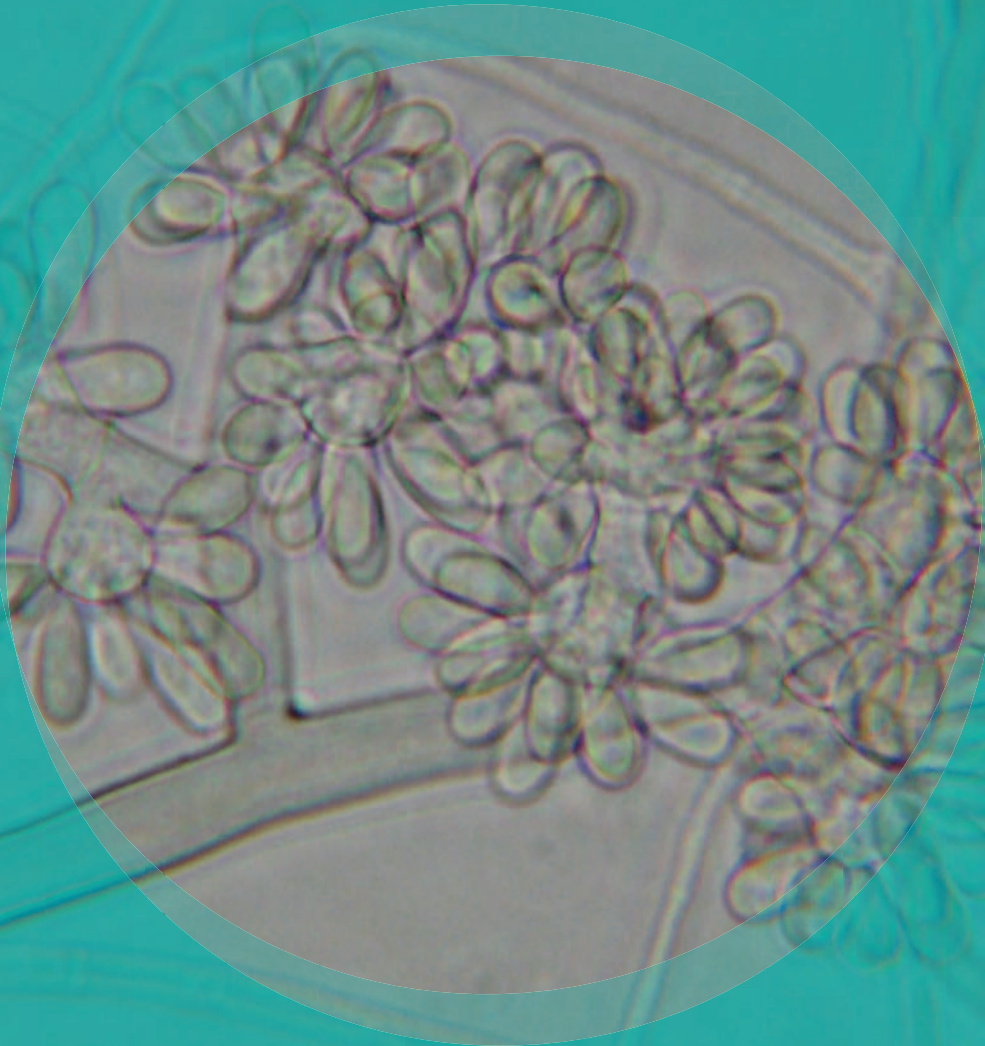


# Botrytis



**Natural Habitats** *Plant pathogen responsible for causing gray mold (B. cinerea) on grapes, strawberries, raspberries, blackberries, low bush blueberries, lettuce, cabbage, and onions*

**Suitable Substrates in the Indoor Environment**

*Houseplants • Fruits • Vegetables*

**Water Activity** *Unknown*

**Mode of Dissemination** *Wind*

**Allergenic Potential** *Type I (asthma and hay fever)*

**Potential Opportunist or Pathogen** *Hyalohyphomycosis*

**Industrial Uses** *Biocontrol agent of insects*

**Potential Toxins Produced** *Unknown*



**EMSL ANALYTICAL, INC.**  
[www.emsl.com](http://www.emsl.com)



**LAB SERVICES:** Asbestos, Mold, Bacteria, Industrial Hygiene, Metals, Allergens, PCR-Polymerase Chain Reaction (DNA), Silica, Volatiles Scan, Formaldehyde by HPLC, Water and Materials Testing.

107 HADDON AVE, WESTMONT NJ 08108 TEL: 800.220.3675