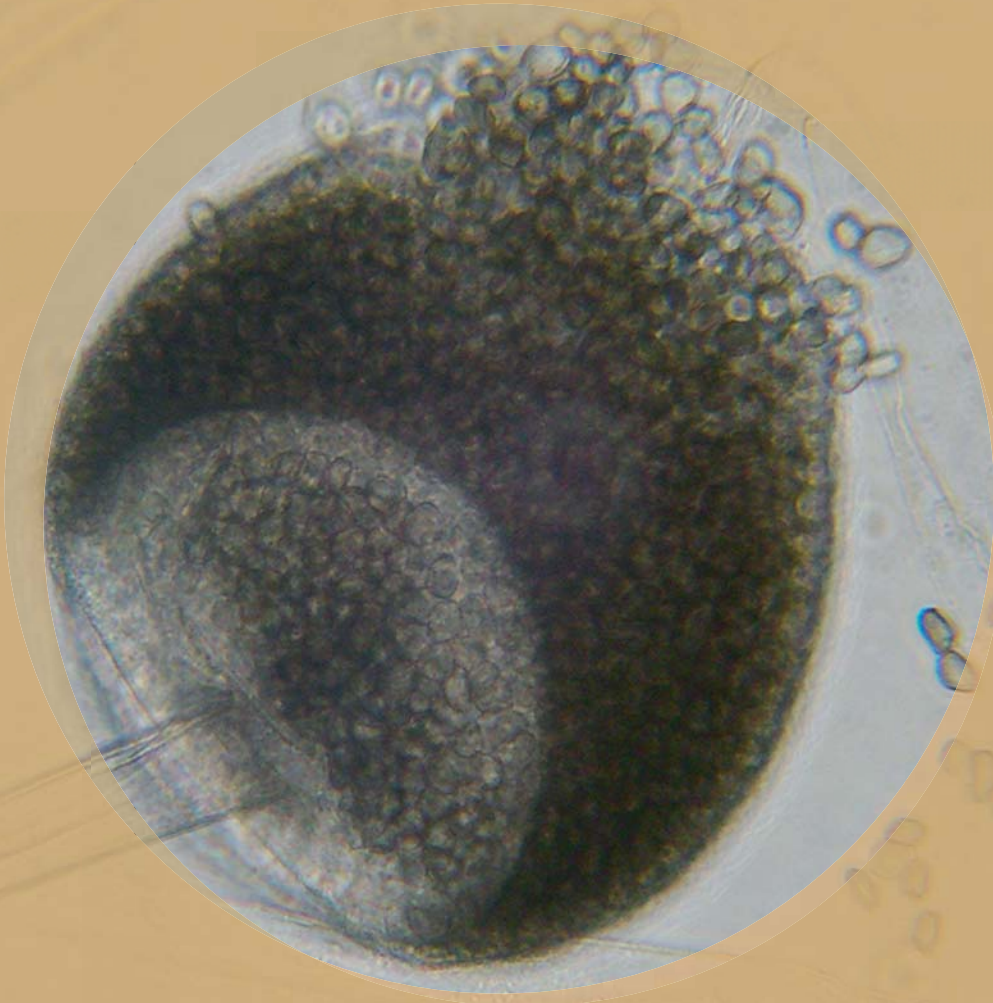


Rhizopus



Natural Habitats *Dung • Fruits- causing rhizopus rot on stone fruits and strawberries • Soils • Vegetables*

Suitable Substrates in the Indoor Environment
Stored fruits and vegetables

Water Activity $A_w=0.93$

Mode of Dissemination *Wind*

Allergenic Potential *Type I (hay fever, asthma) • Type III (hypersensitivity)*

Potential Opportunist or Pathogen *Causal agent of zygomycosis in immunocompromised, malnourished or severely burned people*

Industrial Uses *Used to ferment rice into miso • Used to ferment soybeans to tempeh and sufu*

Potential Toxins Produced *Rhizopus oryzae produces agroclavine (an ergot alkaloid toxic to mammals)*



EMSL ANALYTICAL, INC.
www.emsl.com

LAB SERVICES: Asbestos, Mold, Bacteria, Industrial Hygiene, Metals, Allergens, PCR-Polymerase Chain Reaction (DNA), Silica, Volatiles Scan, Formaldehyde by HPLC, Water and Materials Testing.

